



of South Florida, Inc.

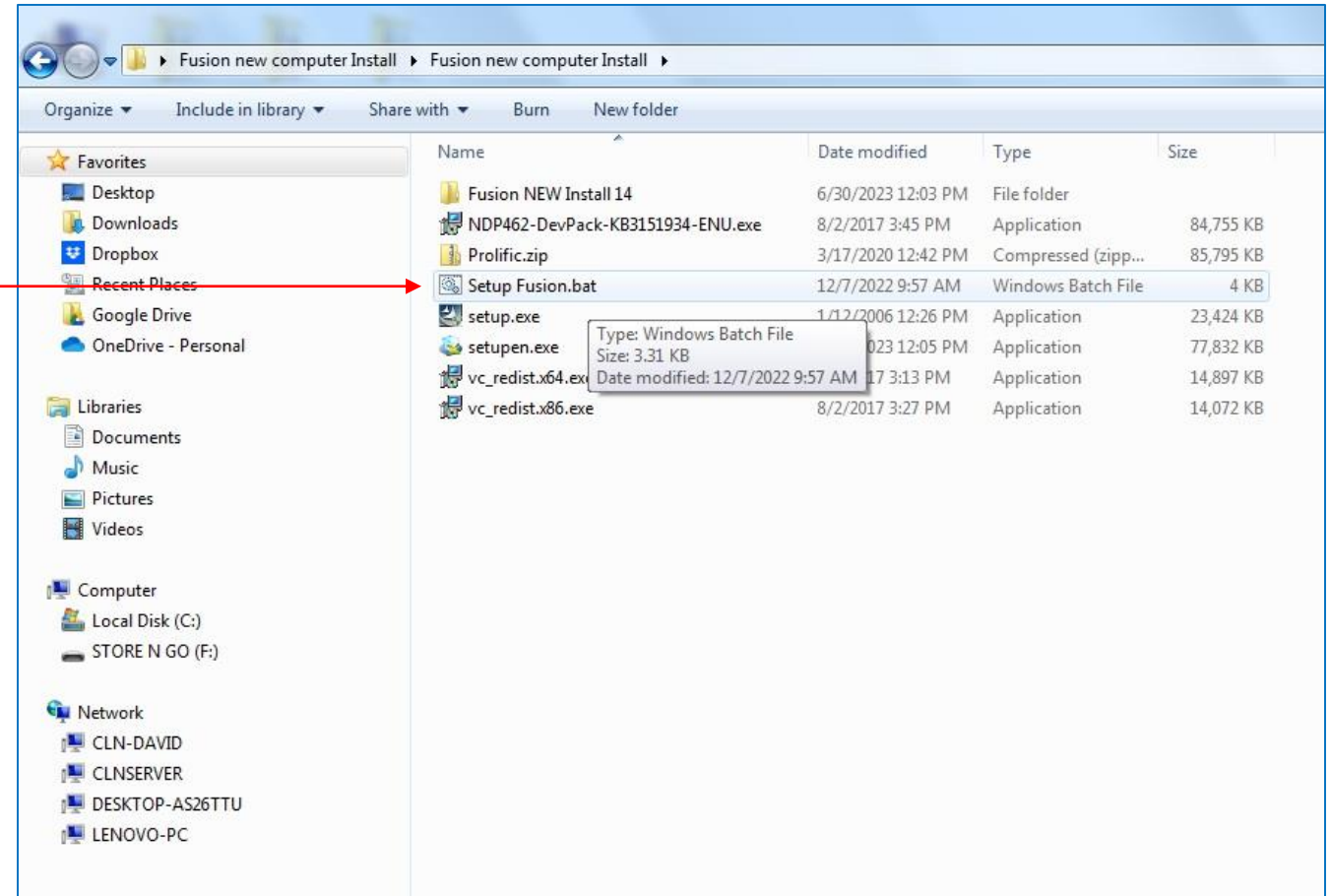
High Performance | Tight Tolerances | Clean Cuts

Fusion Software New Computer Install Instructions



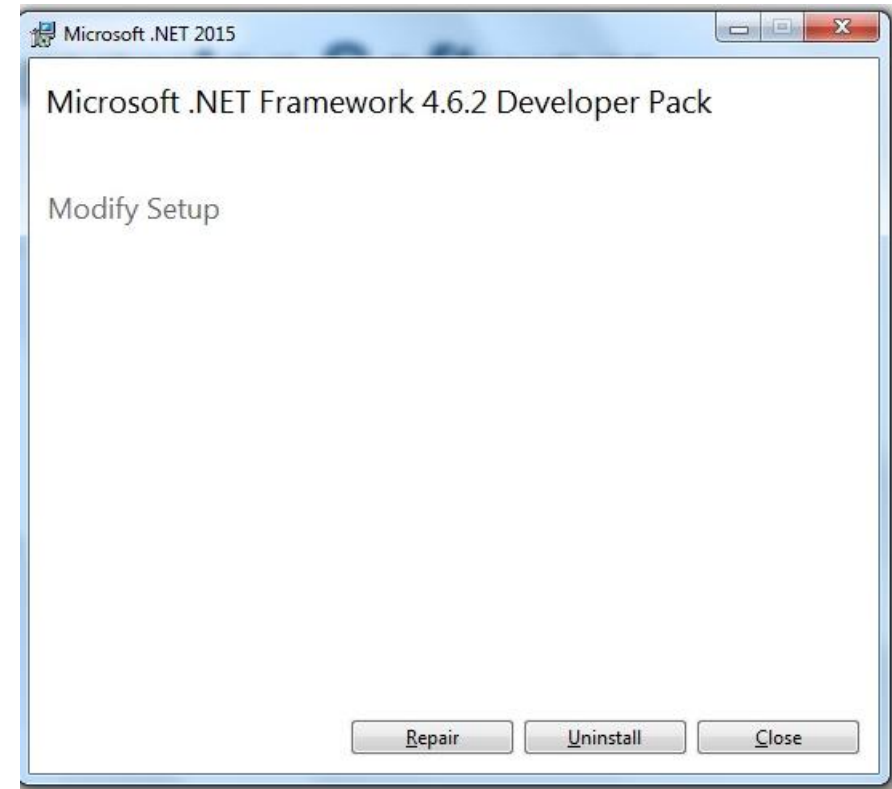
Fusion New Computer Software

- Download the latest Program Files at CLNofSFL.com.
- Extract or unzip the files to your desktop for easy access.
- Double click on the folder to see the extracted files.
- Double click the file called Setup Fusion.bat.
- If you receive a Windows Protection message that is preventing an unrecognized app from starting. Click More Info then Run Anyway.
- A black screen will pop up and it will install the necessary files. You may have to press any key to continue.
- Throughout this install you will have to return back to the black screen to press any key to continue the install.



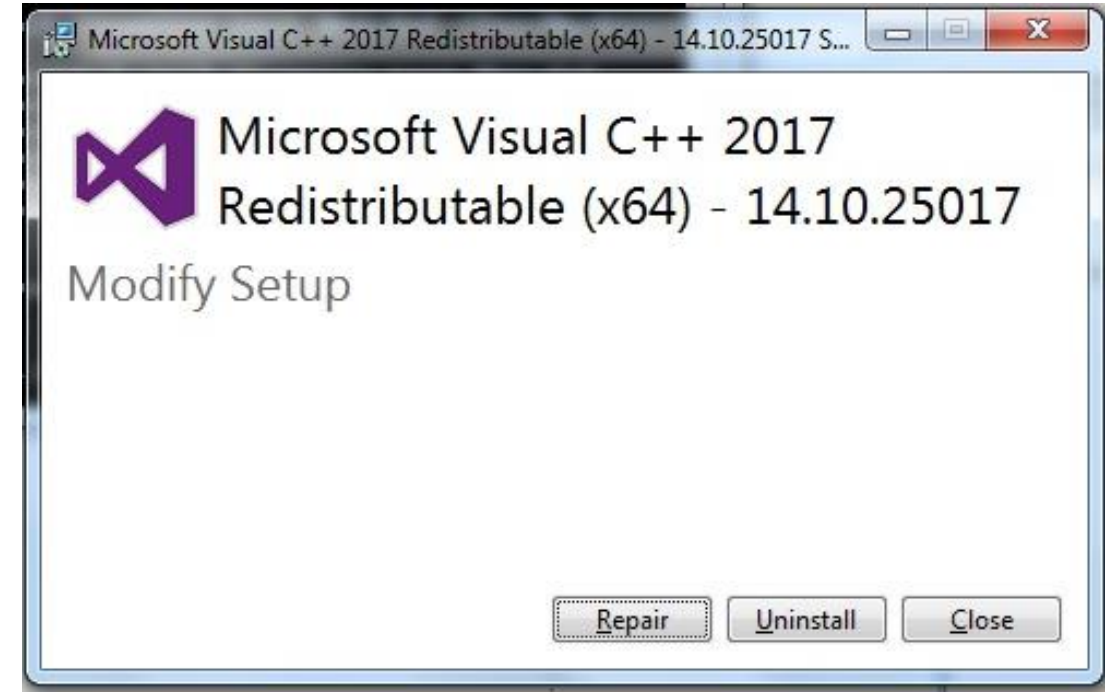
Fusion New Computer Software

- **Install the Microsoft. Net Framework Developer Pack.**
- Click next
- Click Close
- Then go back to the black screen and hit any key to continue twice.



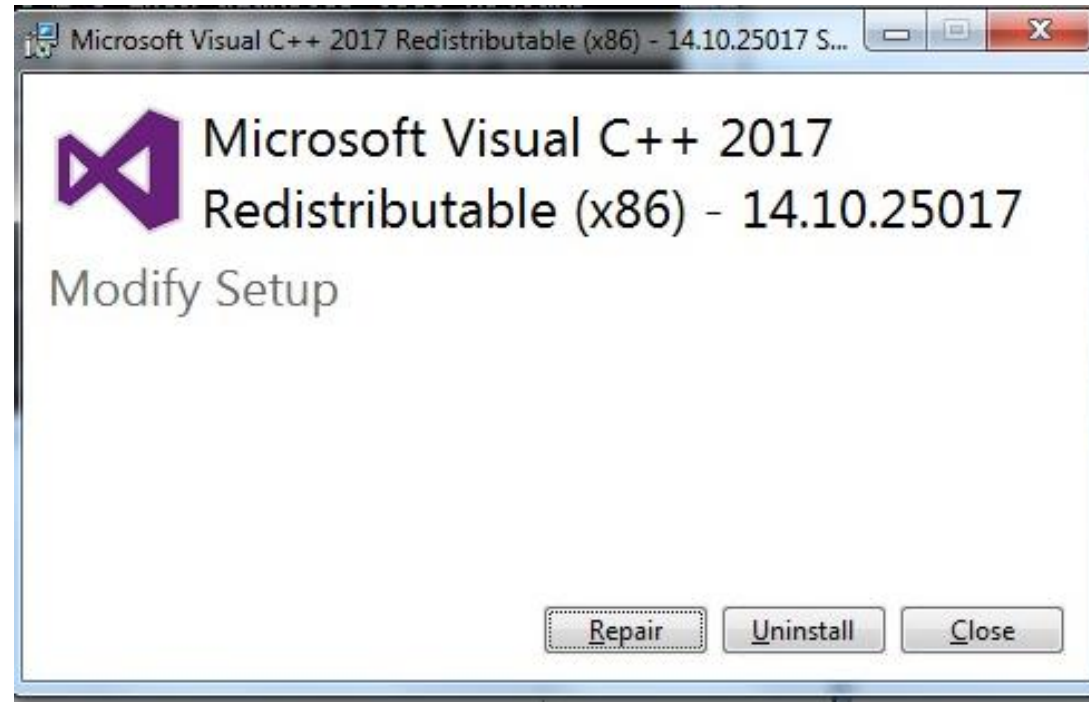
Fusion New Computer Software

- **Install the Microsoft Visual (X64) C++.**
- Click next
- Click Close
- Then go back to the black screen and hit any key to continue twice.



Fusion New Computer Software

- **Install the Microsoft Visual (X86) C++.**
- Click next
- Click Close
- Then go back to the black screen and hit any key to continue twice.



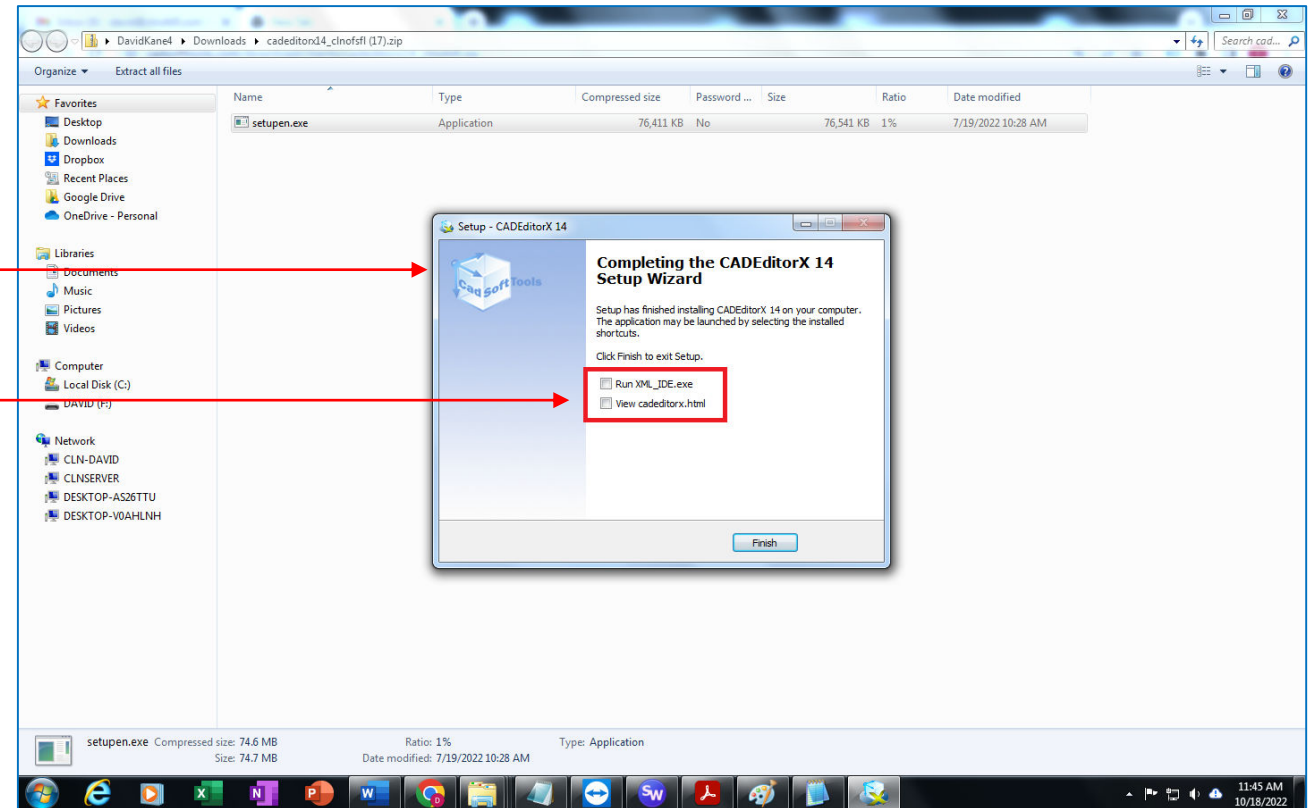
Fusion New Computer Software

- **Install the Cad Editor Software**
- Click OK



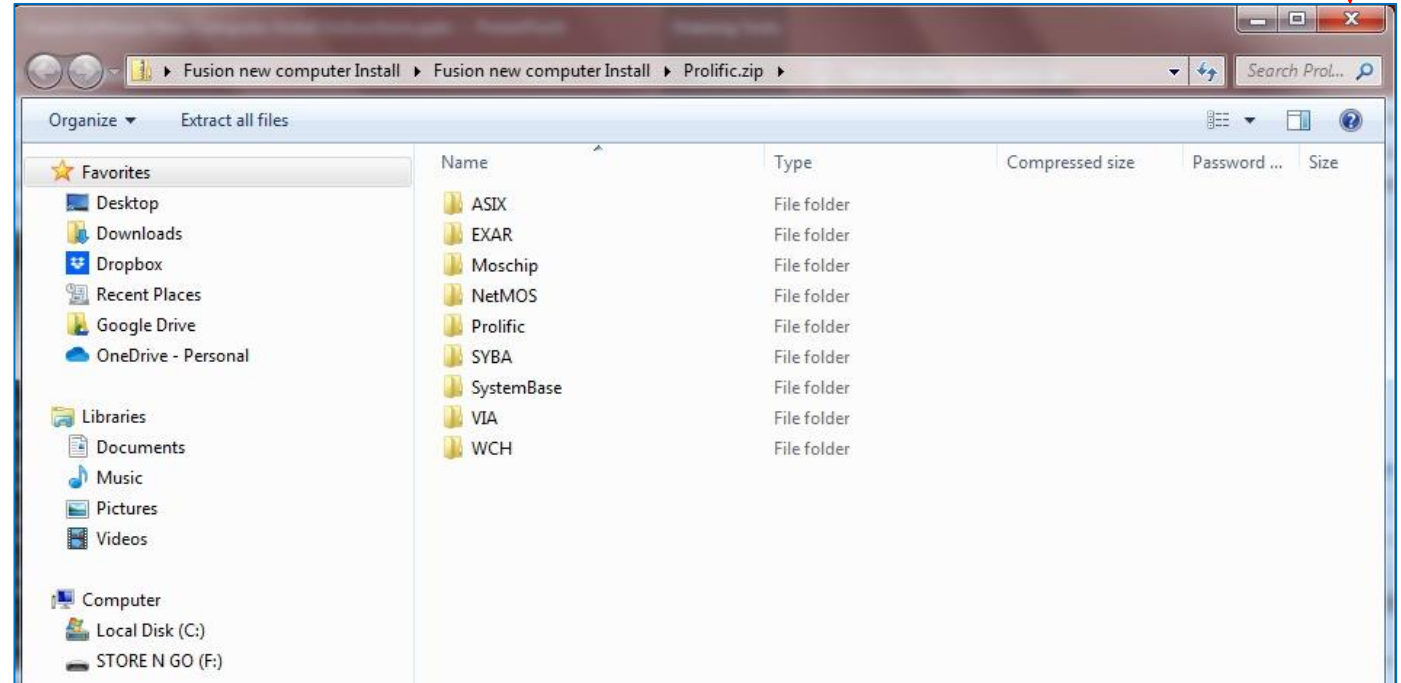
Fusion New Computer Software

- Click ok or next for everything, but this screen.
- Uncheck the boxes then click finish. If you did not uncheck the boxes, then just close the editor screens, it's not a big deal.
- Then go back to the black screen and hit any key to continue.



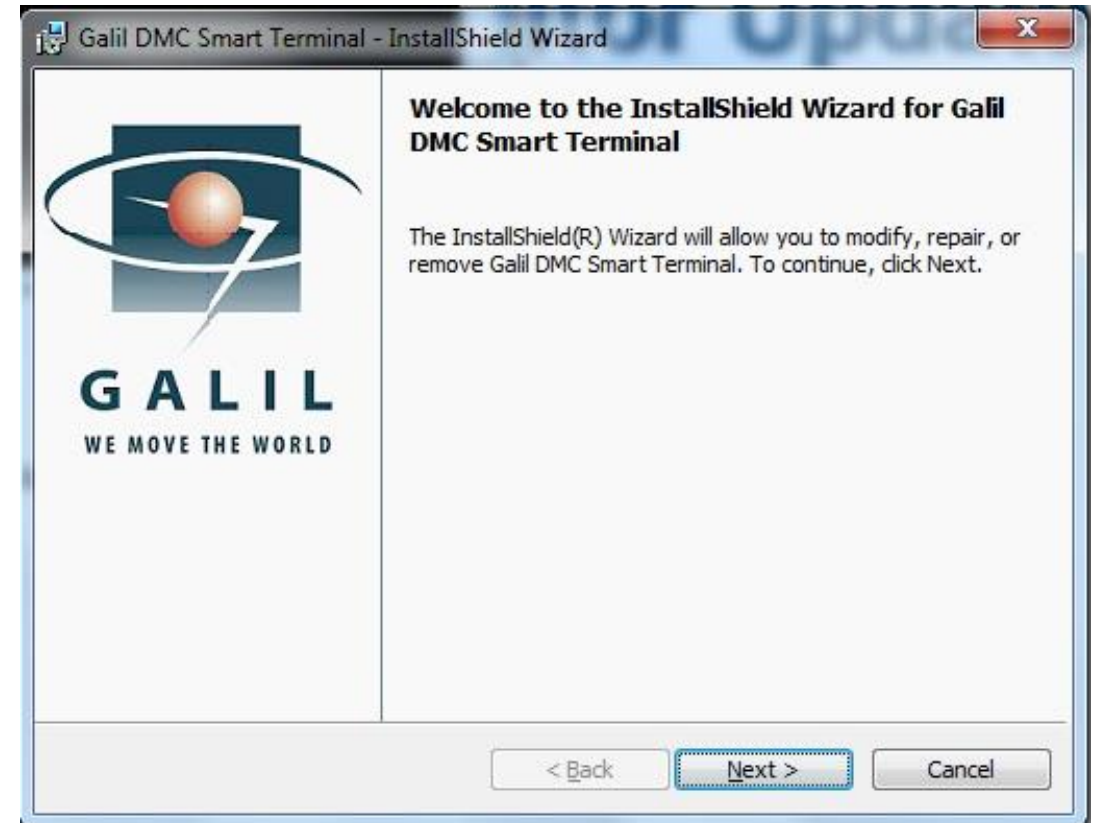
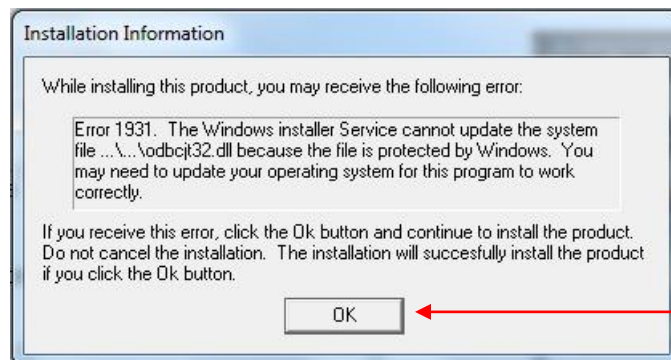
Fusion New Computer Software

- Close this window.
- Then go back to the black screen and hit any key to continue.



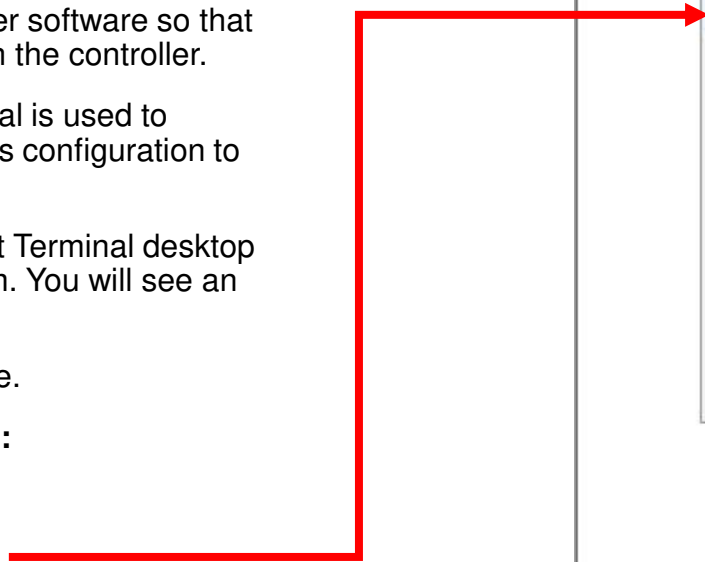
Fusion New Computer Software

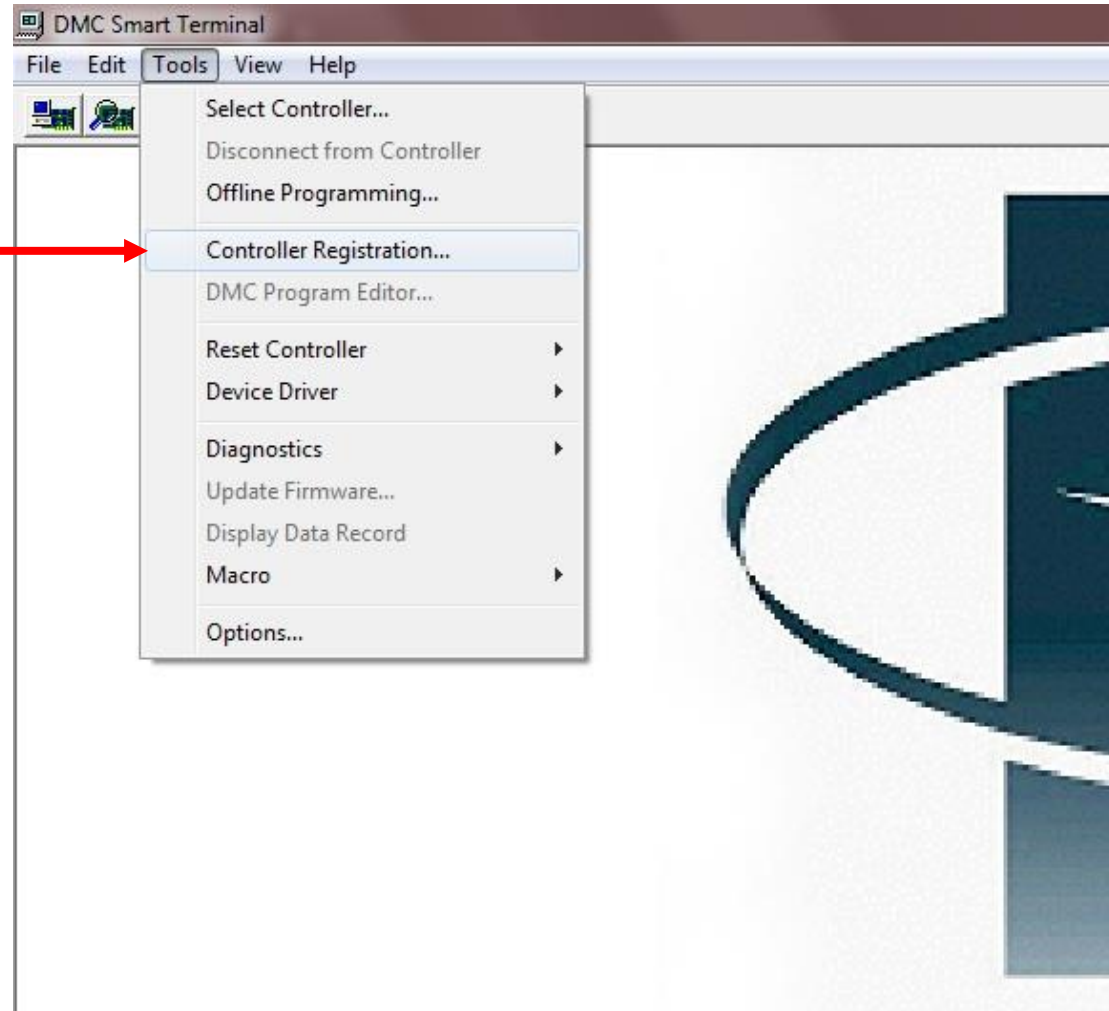
- Click Next and install for everything.
- When you get to this message click OK. This is a nonessential error message.
- Click Finish,
- Then click Yes, to restart the computer.
- Then go back to the black screen and hit any key to continue twice.
- The You are finished installing the software.



Fusion New Computer Software

- **Controller Registration:**

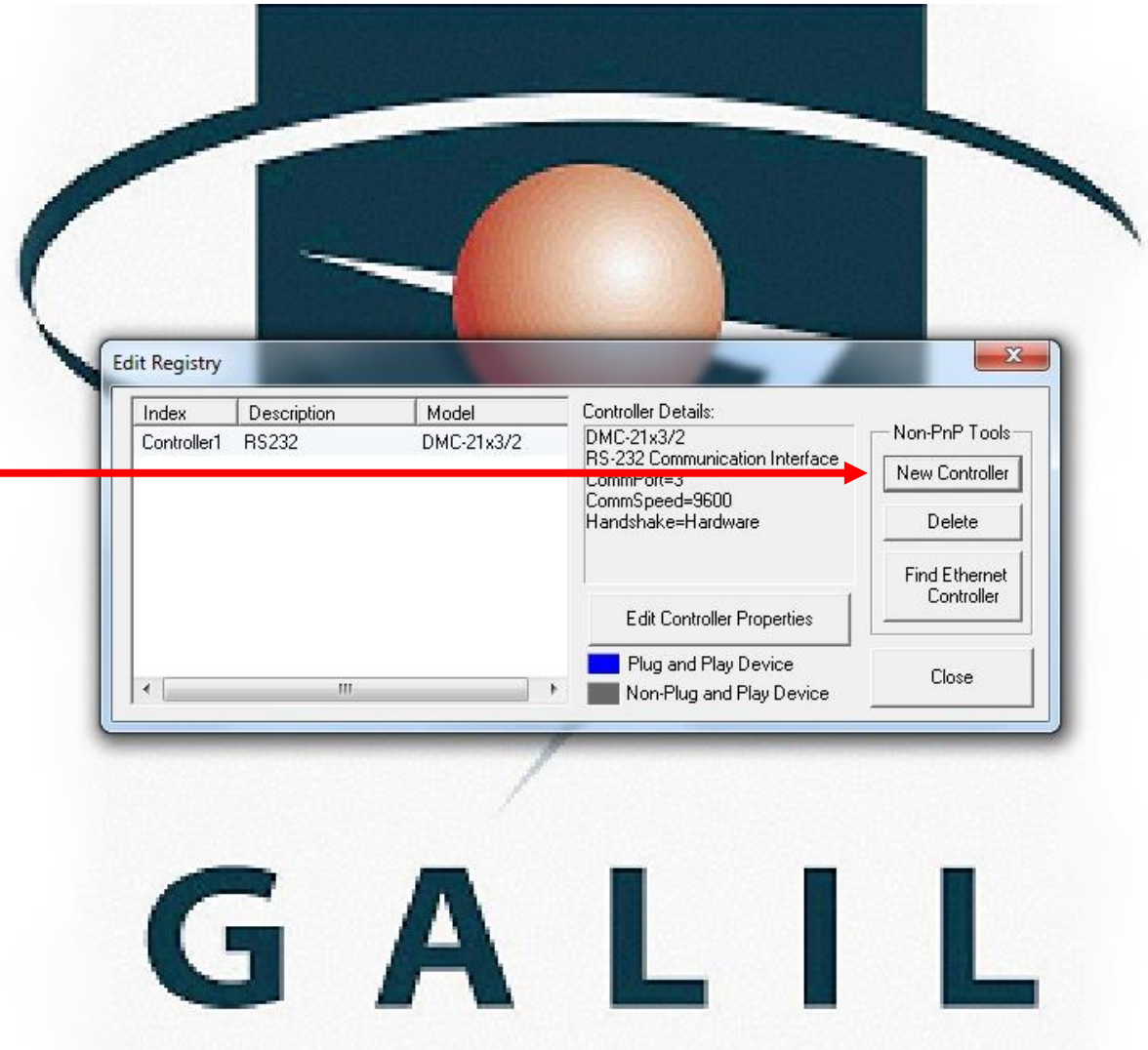
- Setup the Galil Controller software so that you can communicate with the controller.
- The DMC Smart Terminal is used to download the controller's configuration to the controller.
- Click on the DMC Smart Terminal desktop icon to start the program. You will see an error message.
- Close the error message.
- **Controller registration:**
- Click on Tools
- Controller Registration. 



Fusion New Computer Software

Controller registration Continued:

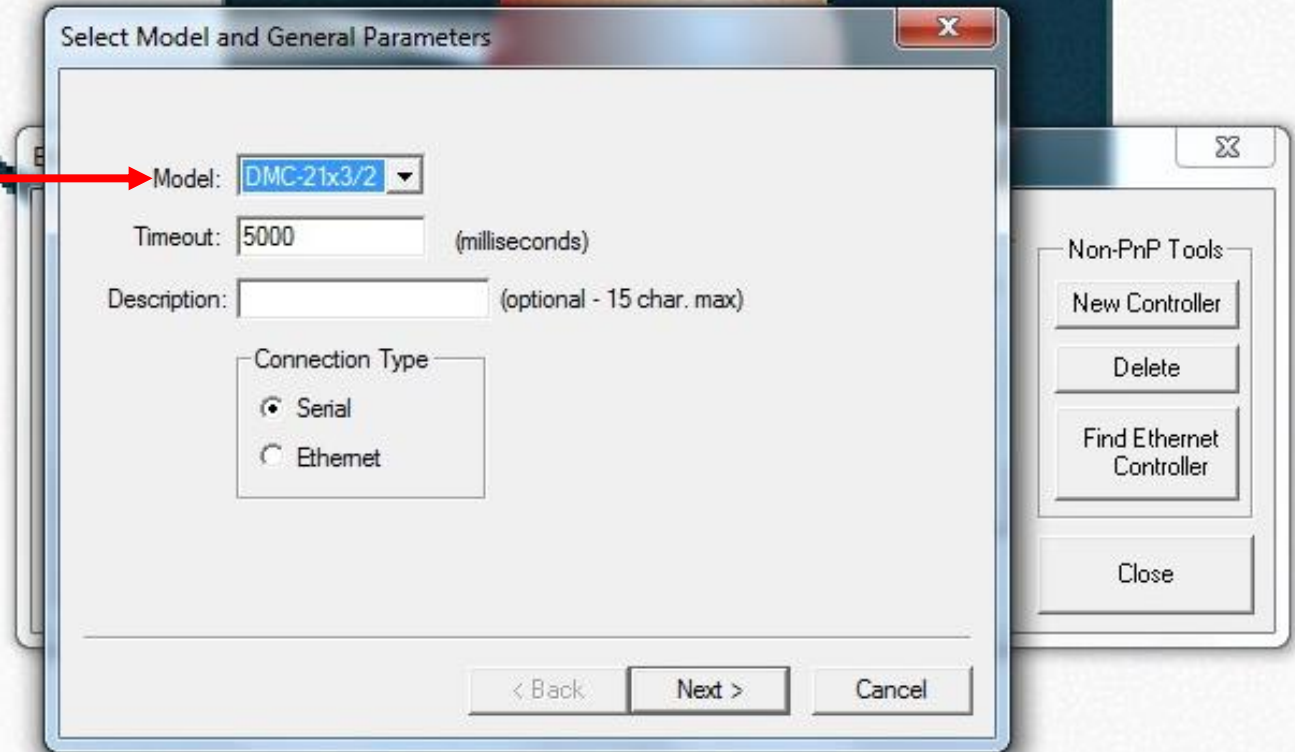
- Click on New Controller.



Fusion New Computer Software

Controller registration Continued:

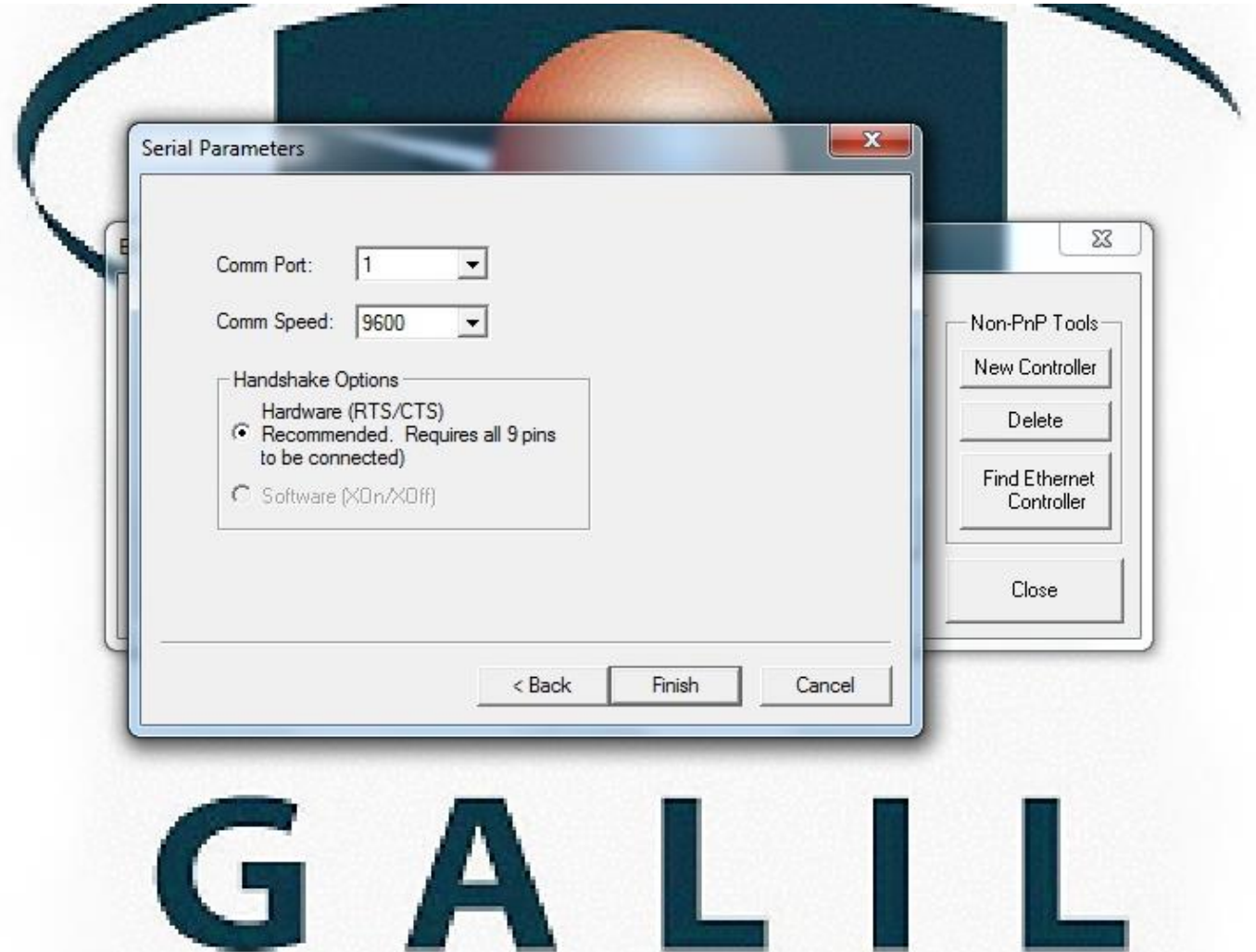
- Click on Model.
- Select DMC-21x3/2
- Time out 5000
- Click on serial
- Click next



Fusion New Computer Software

Controller registration Continued:

- Select the Com Port that the computer is assigned to. It can only be 1,2,3,or4..
- Set Comm Speed to 9600
- Click on Hardware (RTS/CTS)
- Click Finish.



Fusion New Computer Software

Controller registration Continued:

- Then click Okay, to controller was added to registry
- Click close on the edit registry dialog box.



Fusion New Computer Software

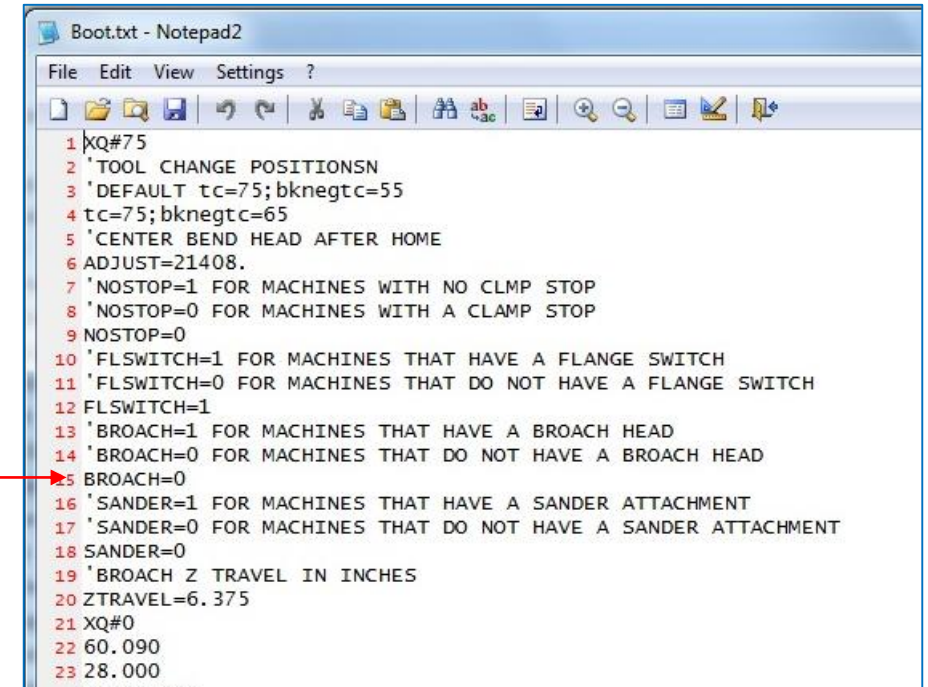
- **This step is only needed if you installed PCI to com port card. If the comport came with the computer, then skip this step.**
- PCI com port driver card setup.
- Go to the device manager and locate the uninstall device that is associated with the PCI com port.
- Right click on other device and click properties.
- Update driver, browse files on the computer.
- Go to C:\Comport drivers\PCI Card comport.
- Run once for the card and once for each comport.
- The comport needs to be assigned as 3 and 4.
- If the ports are not 3 and 4. Go to properties \ advance settings and reassign them.

Fusion New Computer Software

- **Manual copy and past Vcruntime.dll files.**
- Copy these two files located at C:\Fusion Notes. (vcruntime140d.dll) and (vcruntime140.dll) to C:\Windows\System32.
- Copy these two files located at C:\Fusion Notes. (vcruntime140d.dll) and (vcruntime140.dll) to C:\Windows\Syswow64.
- Restart the computer.
- **Setup the Fusion Icon.**
- Go to C:\Fusion\Code. Copy the Start Fusion shortcut to the desktop. Change the icon to the fusion icon located in C:\Fusion\Code.

Fusion New Computer Software

- **Register the CadXeditor.**
- Start the Fusion program.
- The registration screen will pop up.
- To register the CadXeditor. Click on the folder called C:\Fusion notes.
- Open the file called (passwords.txt) all of the registration information will be in there.
- Just copy and past the information in one line at a time.
- If it allows you to click register, then your registration information is correct.
- You will have to reset all of the machine settings from scratch.
- If you have a Fusion Plus, then go to C:\Fusion. Double click on Boot.txt and open it in note pad. Change Broach to a 1. Example "BROACH=1" —————
- Save and exit.
- Restart the fusion program.



```
Boot.txt - Notepad2
File Edit View Settings ?
1 XQ#75
2 'TOOL CHANGE POSITIONSN
3 'DEFAULT tc=75;bknegtc=55
4 tc=75;bknegtc=65
5 'CENTER BEND HEAD AFTER HOME
6 ADJUST=21408.
7 'NOSTOP=1 FOR MACHINES WITH NO CLMP STOP
8 'NOSTOP=0 FOR MACHINES WITH A CLAMP STOP
9 NOSTOP=0
10 'FLSWITCH=1 FOR MACHINES THAT HAVE A FLANGE SWITCH
11 'FLSWITCH=0 FOR MACHINES THAT DO NOT HAVE A FLANGE SWITCH
12 FLSWITCH=1
13 'BROACH=1 FOR MACHINES THAT HAVE A BROACH HEAD
14 'BROACH=0 FOR MACHINES THAT DO NOT HAVE A BROACH HEAD
15 BROACH=0
16 'SANDER=1 FOR MACHINES THAT HAVE A SANDER ATTACHMENT
17 'SANDER=0 FOR MACHINES THAT DO NOT HAVE A SANDER ATTACHMENT
18 SANDER=0
19 'BROACH Z TRAVEL IN INCHES
20 ZTRAVEL=6.375
21 XQ#0
22 60.090
23 28.000
```