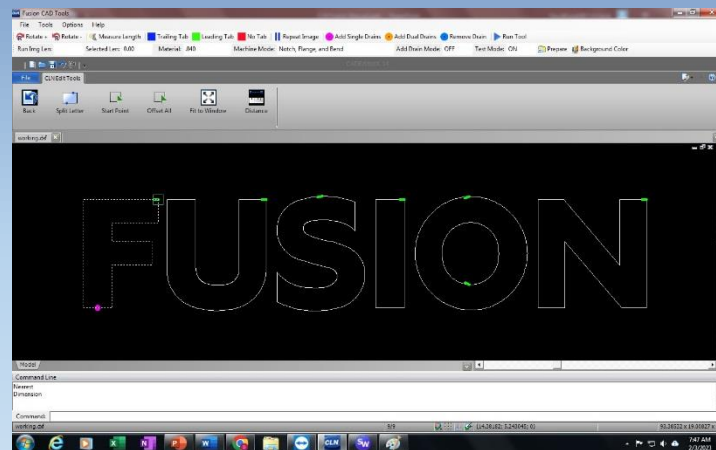




of South Florida, Inc.

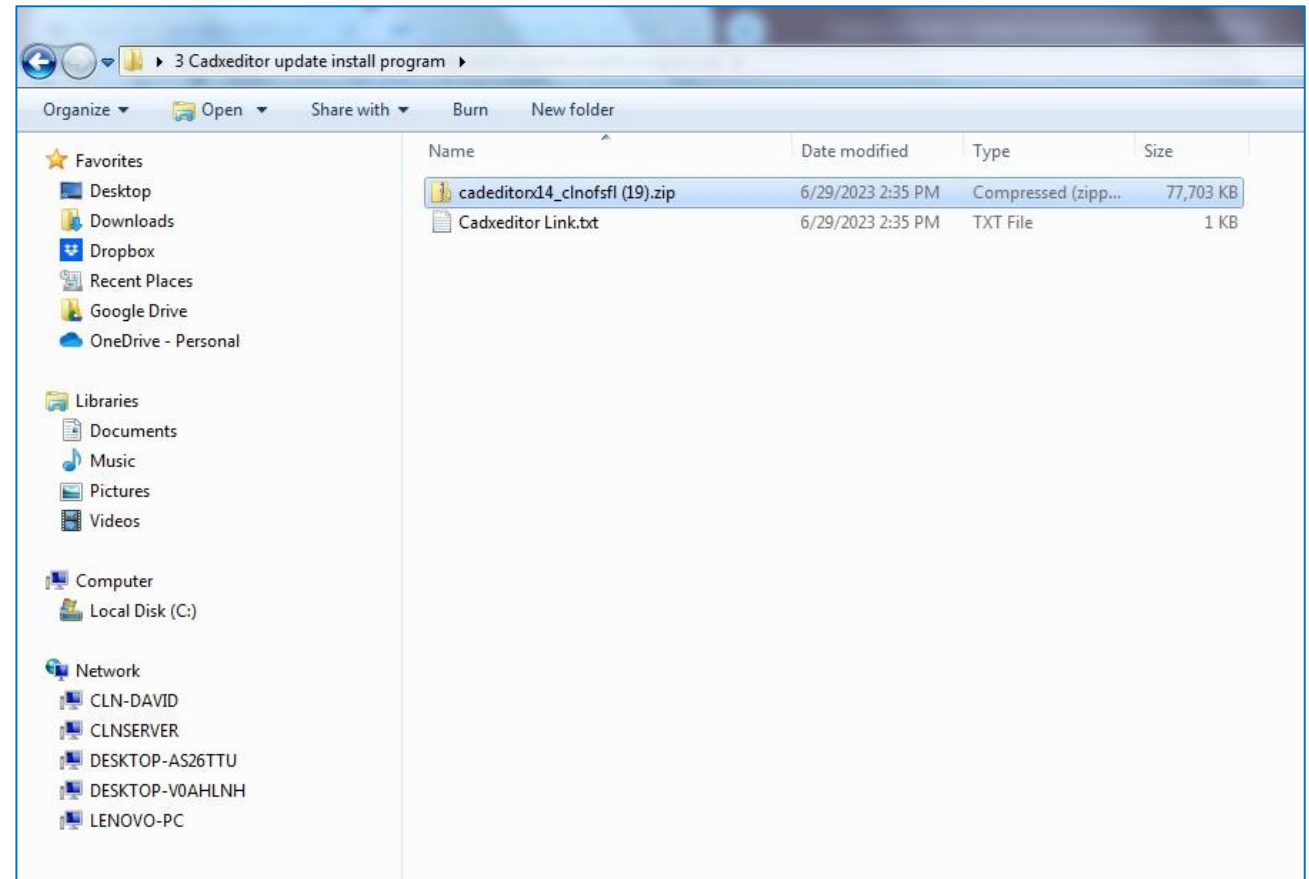
High Performance | Tight Tolerances | Clean Cuts

Fusion Cad Editor Update Instructions



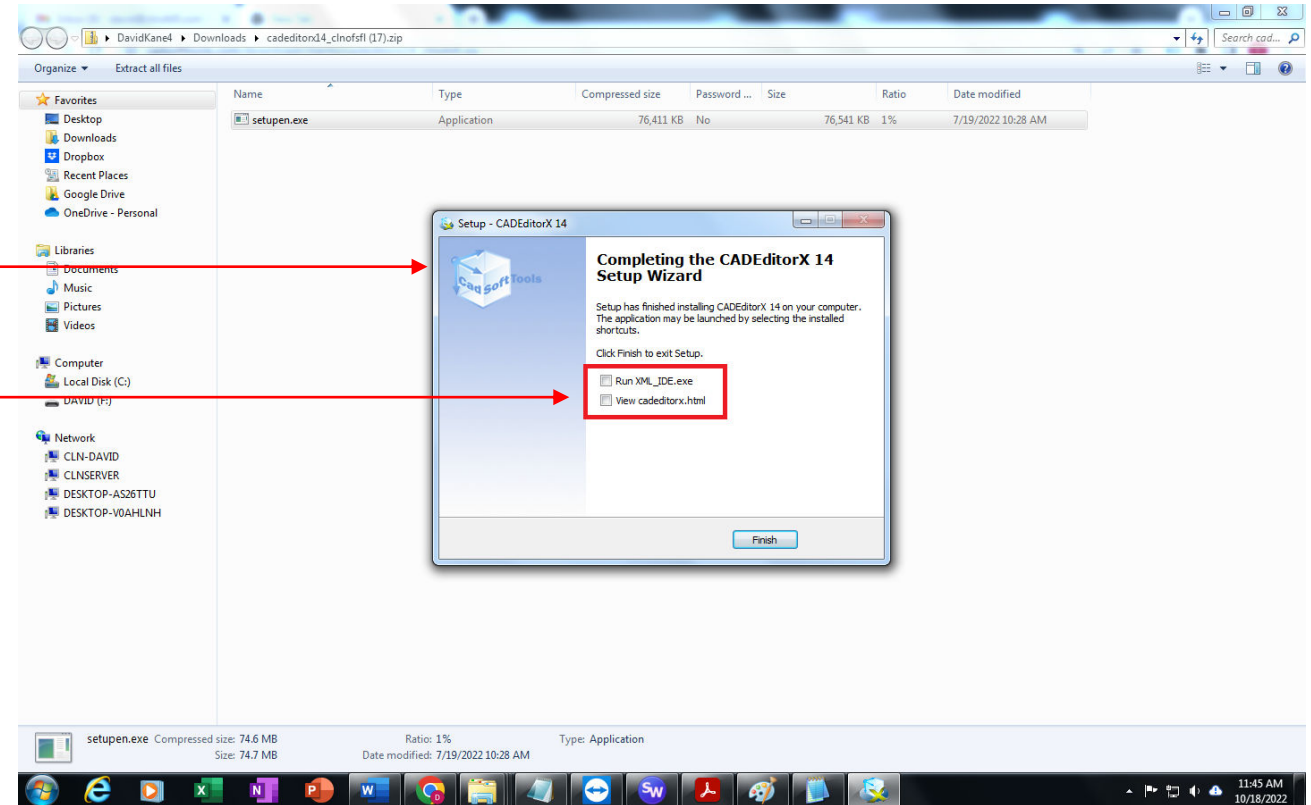
Fusion Cad Editor Update

- Download the latest update Files at CLNofSFL.com.
- Extract or unzip the files to your desktop for easy access.
- Double click on the folder to see the extracted files.
- Double click the latest file called cadeditorx14_clnofsfl.ZIP
- Double click setupn.exe.
- If you receive a Windows Protection message that is preventing an unrecognized app from starting. Click More Info then Run Anyway.
- Give it time to extract all the files and start the install wizard.



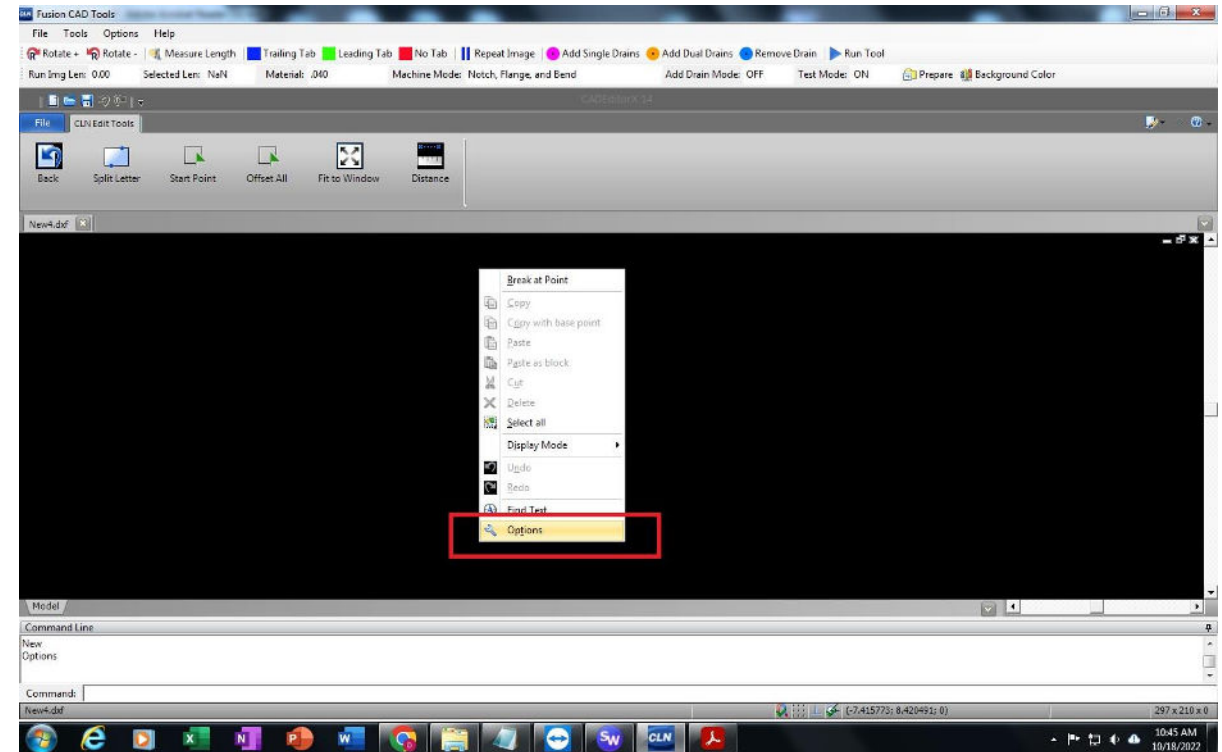
Fusion Cad Editor Update

- Click run then click ok or next for everything, but this screen.
- Uncheck the boxes then click finish. If you did not uncheck the boxes, then just close the editor screens, it's not a big deal.



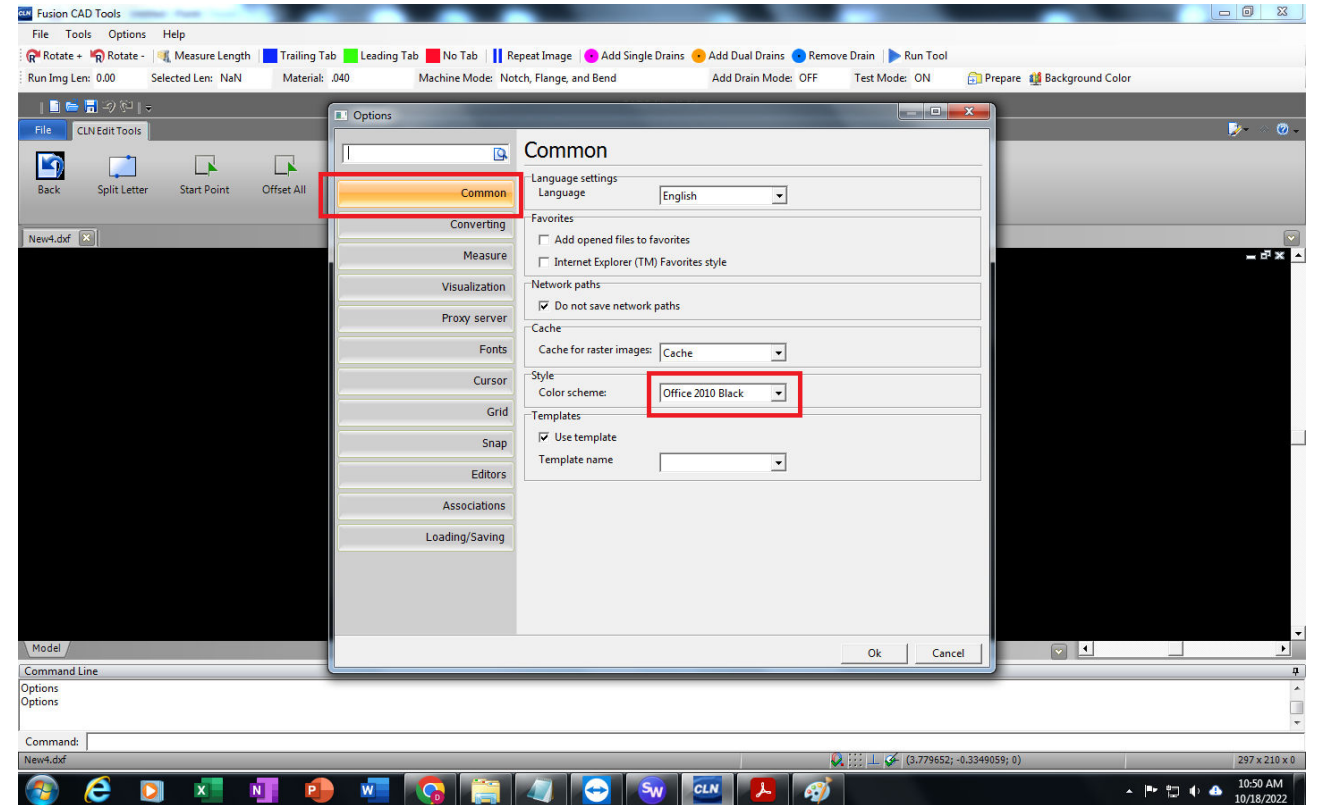
Fusion Cad Editor Update

- **Cadxeditor settings.**
- These settings should be set when you updated the Cadxeditor. However, you must double check the settings to be sure that they are correct.
- Press reset on the side on the machine and then start the fusion program.
- Right clicking in the screen then go to options.



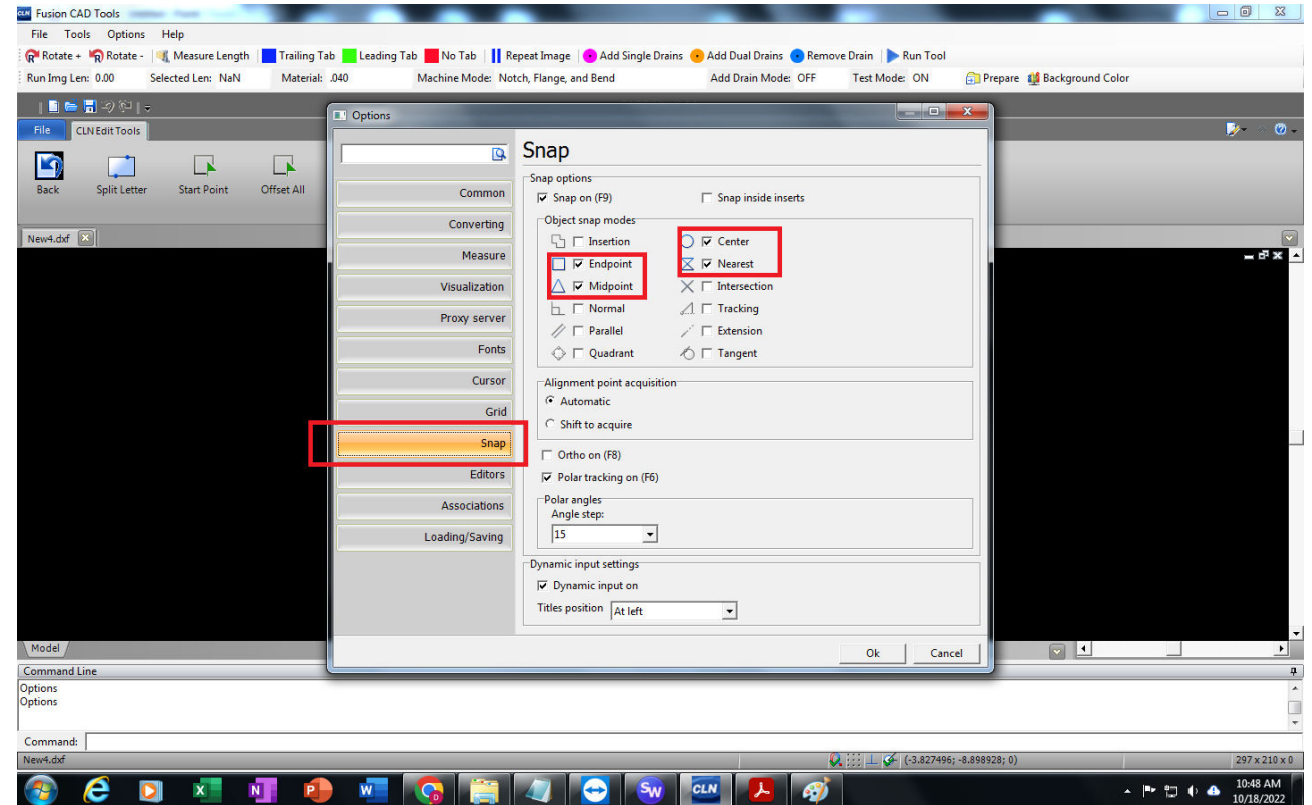
Fusion Cad Editor Update

- Go to common and set the color to black



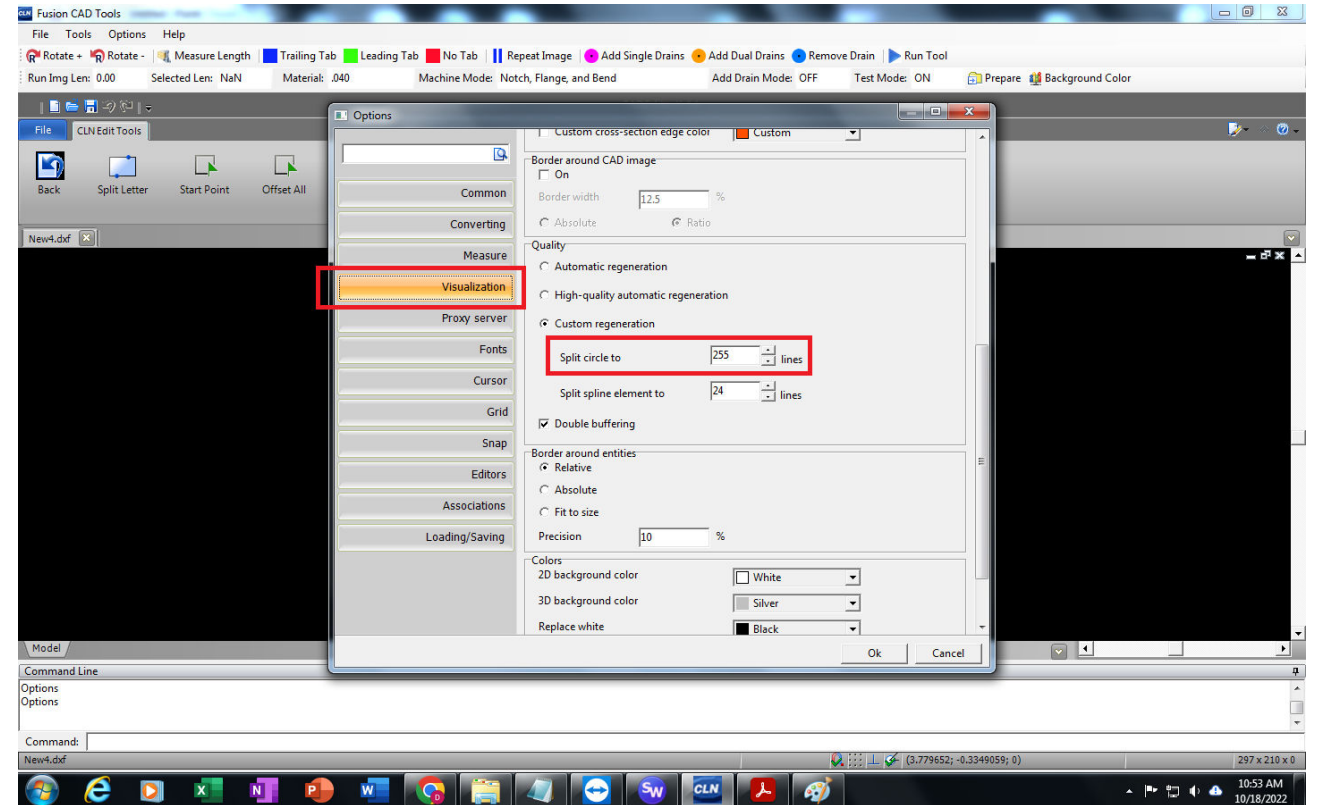
Fusion Cad Editor Update

- Go to snap and check the boxes for the settings, shown in the red boxes.



Fusion Cad Editor Update

- Go to Visualization
- Scroll down to Split Circle and set it to 255.



Fusion Cad Editor Update

- **Check the Step Bend in the Settings.ini file**
- Close the Fusion Program.
- Go to the windows explorer. Go to C:\Users\Users\AppData\Roaming\CADSoftTools\CAEditorX 14
- If you created a new user for the computer. You have to go to this location C:\Users\?????\AppData\Roaming\CADSoftTools\CAEditorX 14
- Open Setting.ini file with note pad. Scroll down until you find [StepBend]. Make sure that they are set just like the example below.

[StepBend]

Angle=20

Ext=0.125

Line=0.75

SubAngle=130

Fusion Cad Editor Update

- If your tool bar doesn't look like this one here, do the following.
- The Cad Editor installer installs the background programs here
C:\Users\Users\AppData\Roaming\CADSoftTools\CAEditorX14
- If you created a new user then you have to move **Interface.XML** to this location,
C:\Users\??????\AppData\Roaming\CADSoftTools\CAEditorX14

